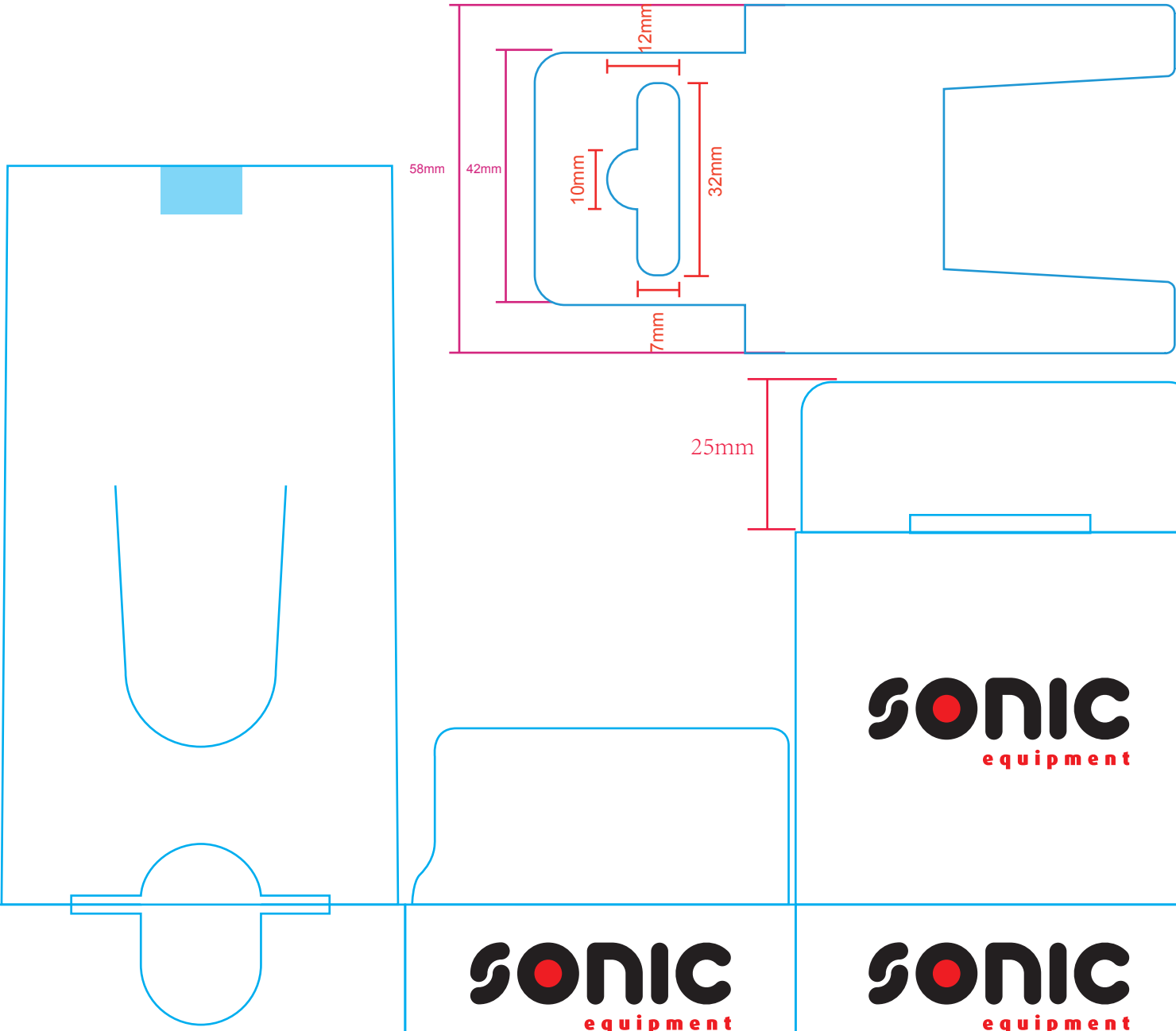


68\*65\*270mm

107\*58mm



### MULTIFUNCTIONAL INSPECTION WORK LIGHT

#### Technical Specifications

- Extremely powerful LED work light and flashlight in one
- Containing the latest, high performance LED technology
- 10 x SMD LEDs mainlight
- High power LED spotlight
- 4 hours charging time
- 2200 mAh Li-ion rechargeable high capacity battery
- Charge indicator

#### Designed for efficient workshop use

- Completely flexible positioning during work
- Lamp head tilts up to 180 degrees
- Two adjustable and retractable suspension hooks
- Three strong built-in magnetic holders
- Cordless - no cable to limit work efficiency
- Ergonomic and user-friendly handle

### MULTIFUNCTIONAL INSPECTION WORK LIGHT

10x SMD LED Spot: High power LED	150/300 lumen Spot: 80 lumen
250/500 lux@0.5m Spot: 850 lux@0.5m	3.7V / 2200 mAh Li-ion
5/2.5h Spot: 5.5h	4h
-10° to +40° C	IP20
260x61x43 mm	252g

Above specifications apply to the worklight only

**INCL. CHARGER**  
 Input: 100-240 AC 50/60 Hz  
 Output: 5V DC 1A

Art. No. 4820515



EU DESIGN PATENT  
FIM CE

Sonic Equipment BV  
Component 114-116  
1446 WP Purmerend  
The Netherlands

WWW.SONIC-EQUIPMENT.COM

